



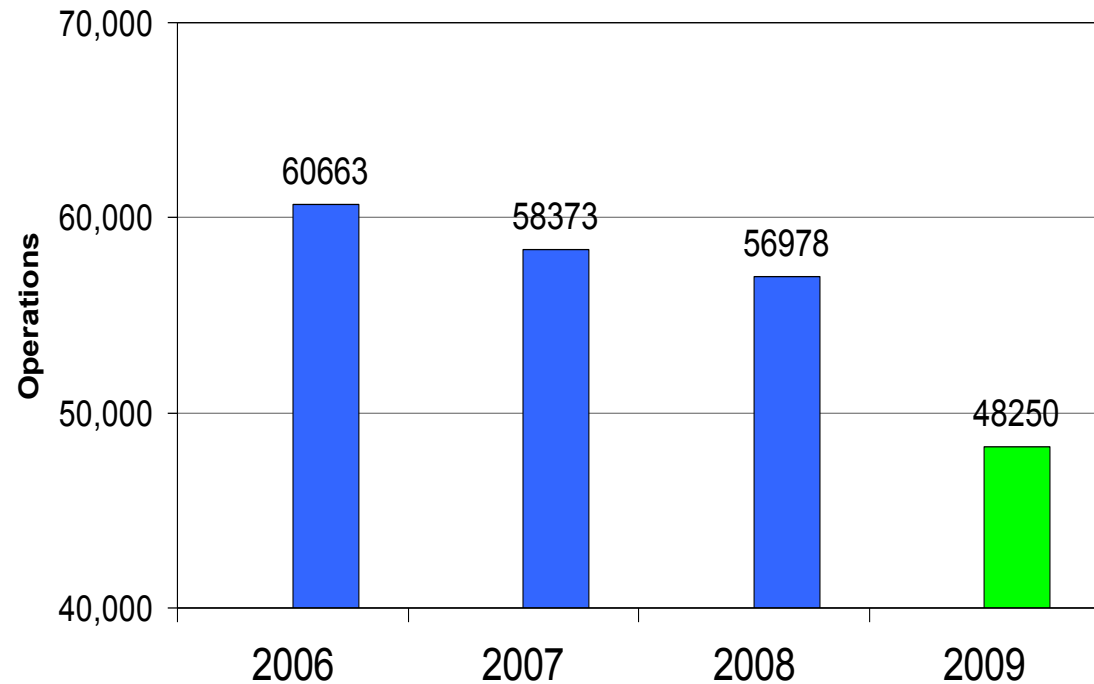
Noise Compatibility Report

1st Quarter 2009

May 12, 2009

Aircraft Operations

1st Quarter Operations



First quarter 2009 aircraft operations declined **15.3%** versus the first quarter 2008. This is five times the average decline between 2006 and 2008.

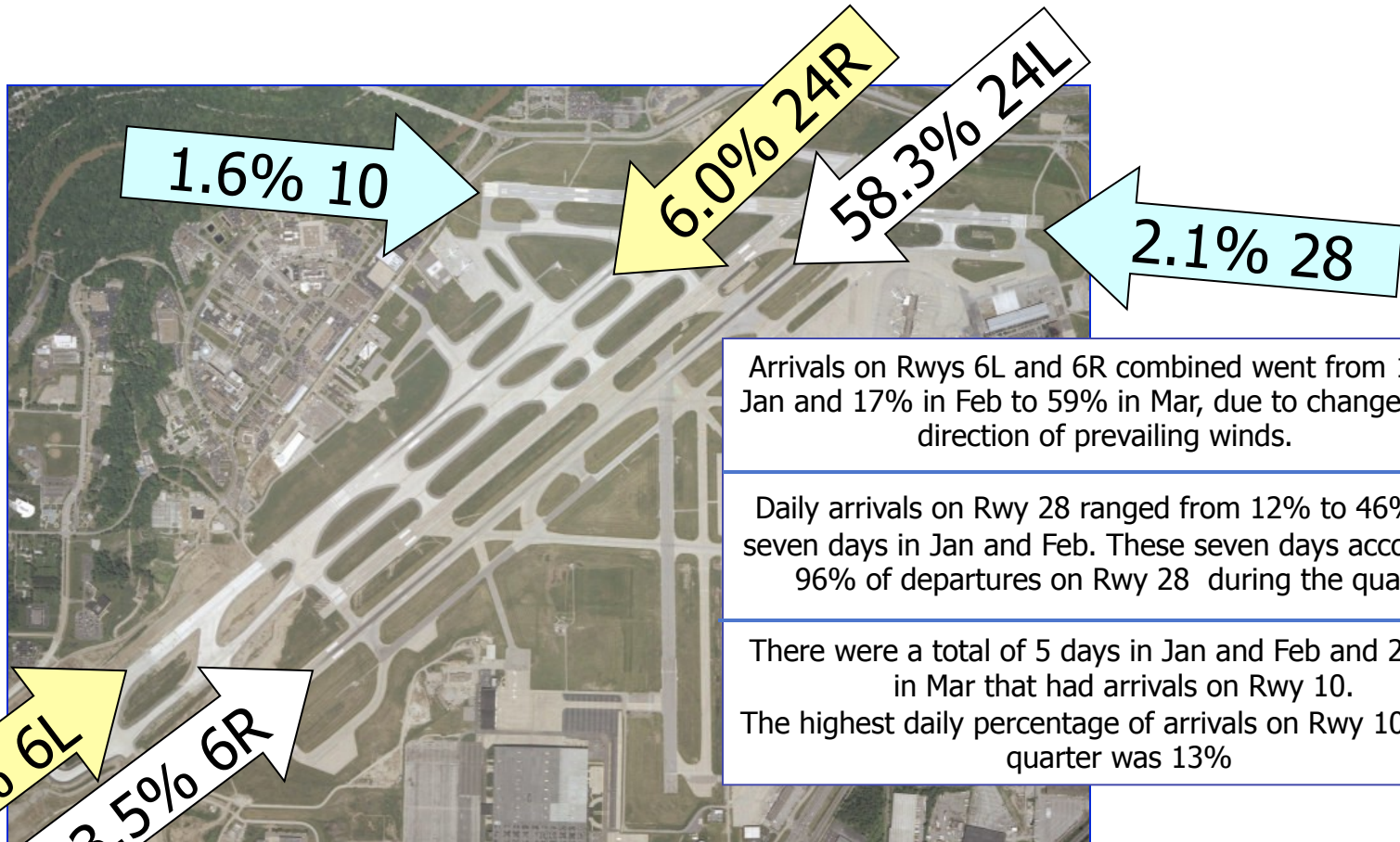
Fleet Mix



During the 1st quarter of 2009, the number of Stage 2 (with hush kit) operations was 65, as compared to 423 in the 1st quarter of 2008.

First Quarter 2009	Landings & Takeoffs	Distribution
Air Carrier		
- Stage 2 with hush kit	65	0.1%
- Heavy (MD11, B757, etc.)	842	1.7%
- Other Stage 3	13,737	28.5%
Regional Jet	23,154	48.0%
Turboprop	6,756	14.0%
Air Taxi	1,987	4.1%
General Aviation	1,668	3.5%
Military	41	0.1%
	48,250	100.0%

Runway Use Landings



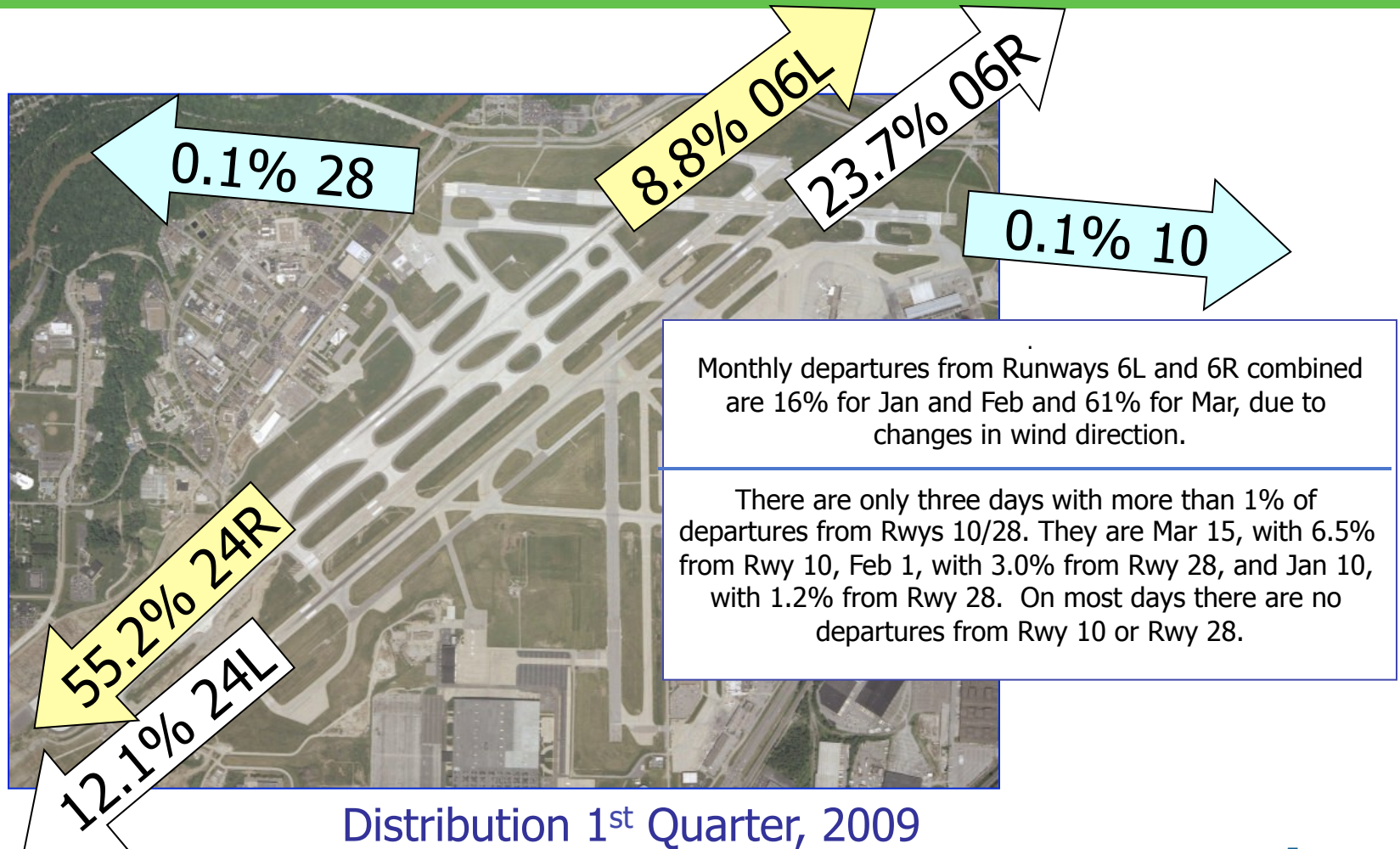
Arrivals on Rwy 6L and 6R combined went from 16% in Jan and 17% in Feb to 59% in Mar, due to changes in the direction of prevailing winds.

Daily arrivals on Rwy 28 ranged from 12% to 46% over seven days in Jan and Feb. These seven days account for 96% of departures on Rwy 28 during the quarter.

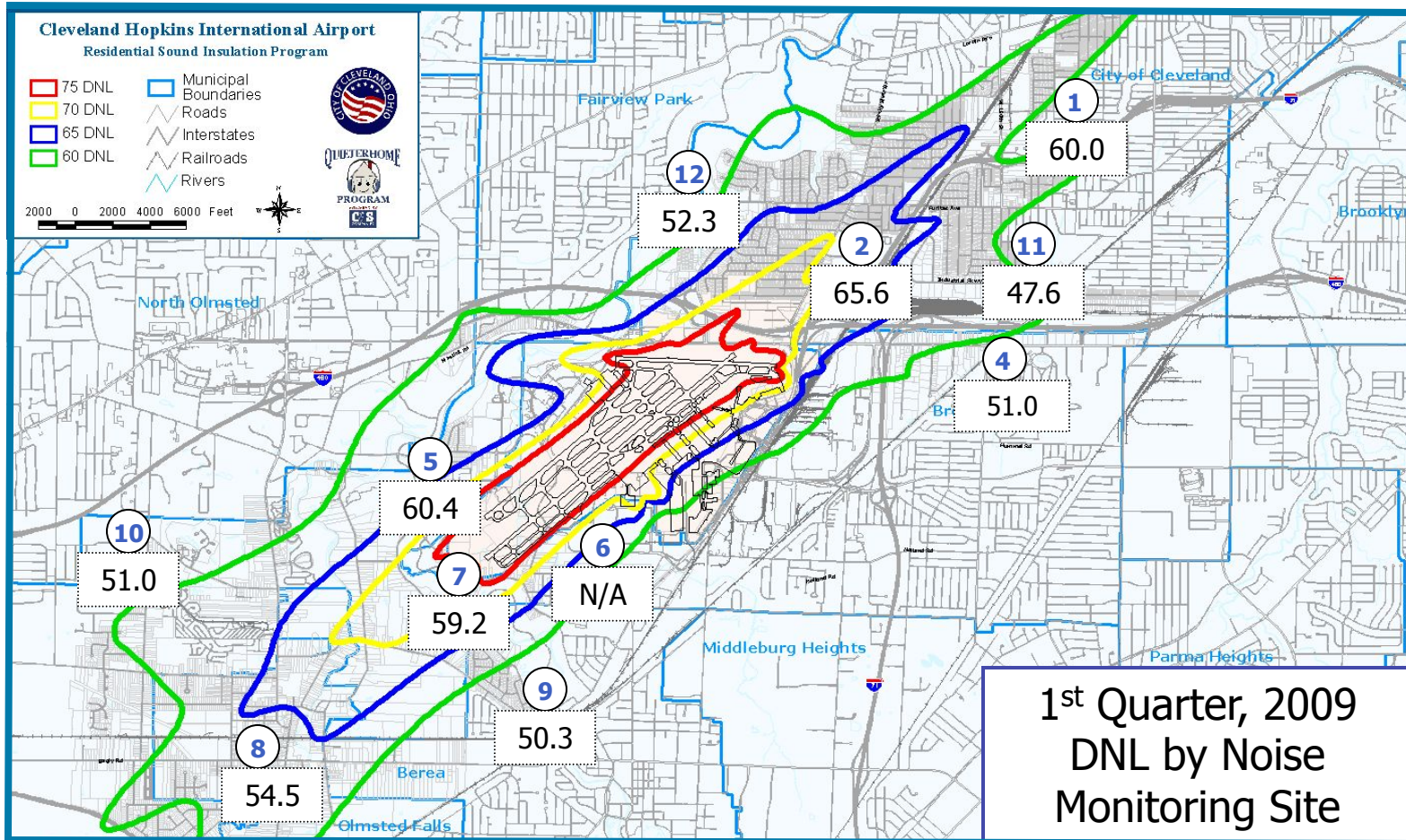
There were a total of 5 days in Jan and Feb and 24 days in Mar that had arrivals on Rwy 10. The highest daily percentage of arrivals on Rwy 10 for the quarter was 13%

Distribution 1st Quarter, 2009

Runway Use Take-Offs

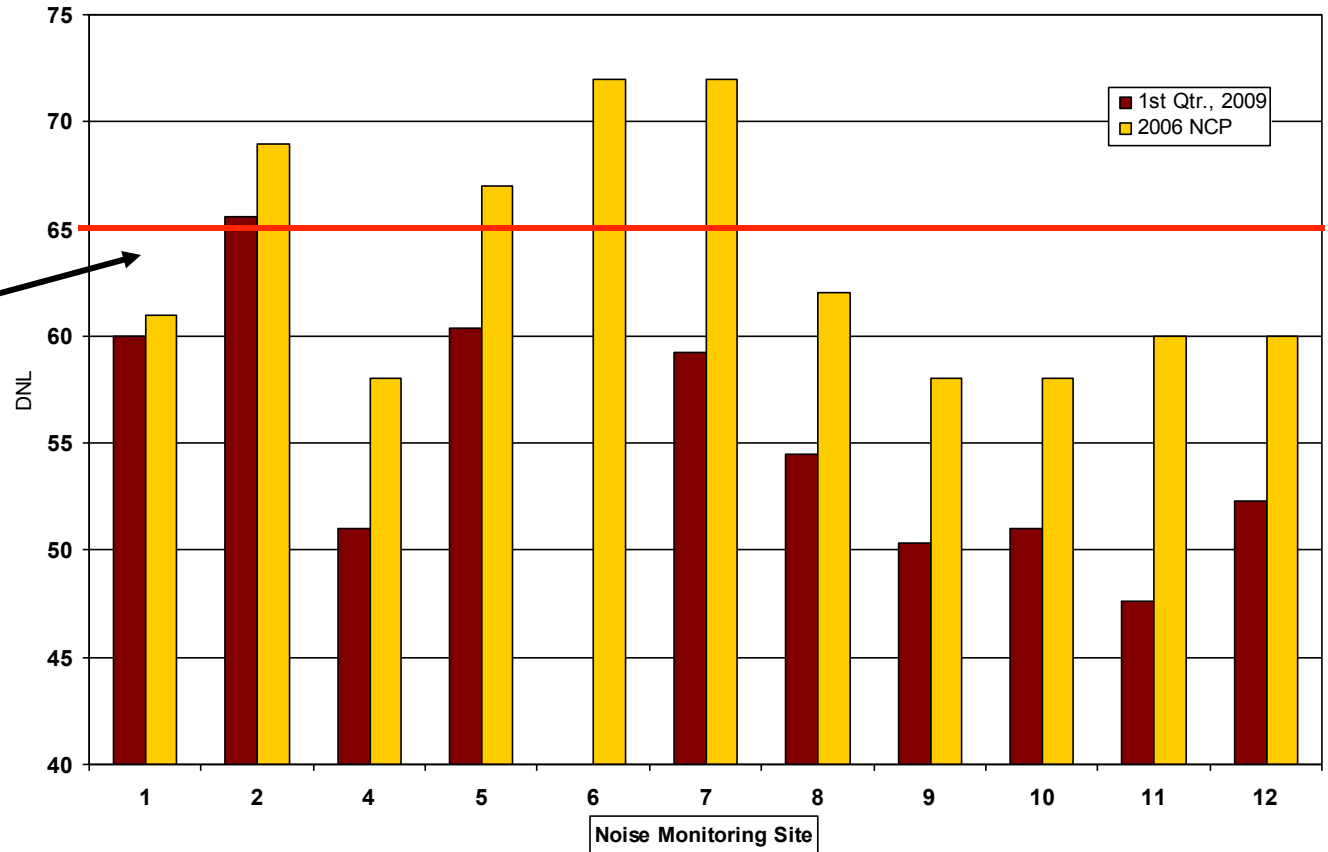


Aircraft Noise

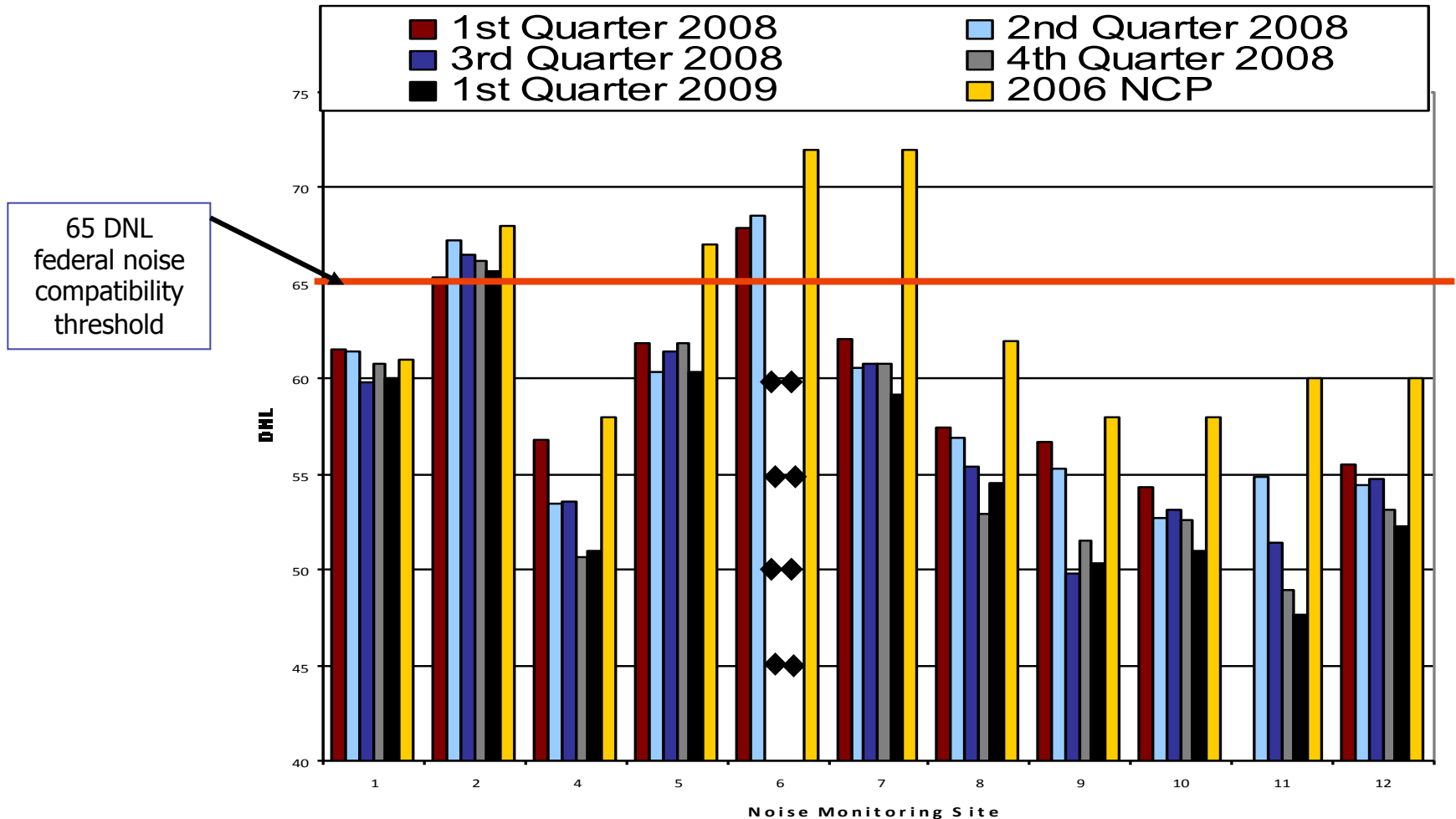


DNL 1st Quarter 2009

65 Ldn FAA noise compatibility threshold

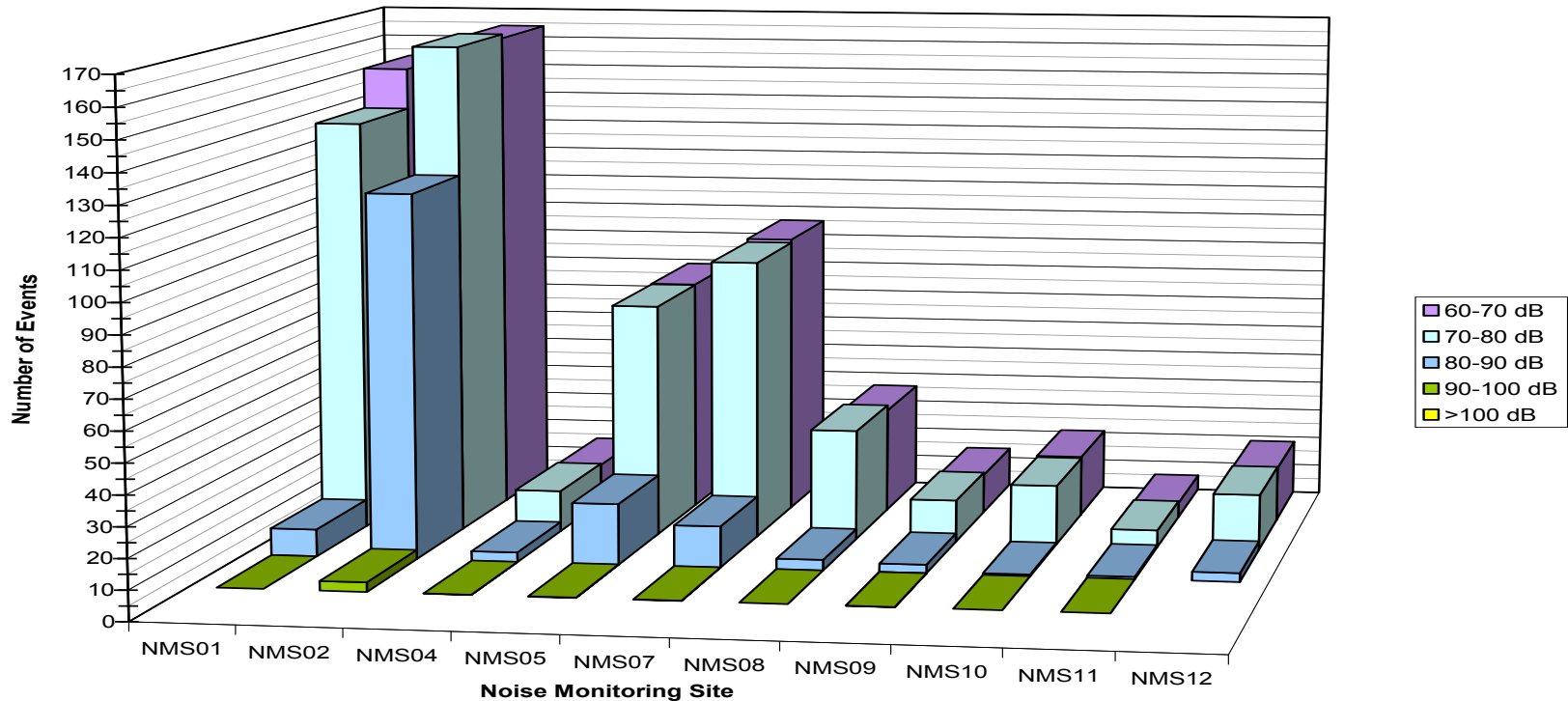


DNL Comparison by Quarter



Distribution of Noise Events

Distribution of Lmax Averaged by Day, 1st Quarter, 2009



Top 3 Lmaxs at each NMS (1 of 2)

NMS	Lmax (dB)	Aircraft	Operation	Time and Date	Duration (sec)	Sound Exposure Level (dB)
NMS01	91.2	Unknown	Possible arrival on 24L or R	4:38 PM, 1/09/09	35.0	97.9
NMS01	89.0	Lear 25	Arrival on 24R	3:48 PM, 3/17/09	33.0	97.9
NMS01	89.0	MD11	Arrival on 24L	5:41 AM, 3/18/09	33.0	96.3
NMS02	98.9	MD11	Arrival on 24L	6:08 AM, 2/12/09	26.0	103.1
NMS02	98.9	S3 Viking	Arrival on 24L	4:16 PM, 2/10/09	13.5	100.6
NMS02	97.3	MD11	Arrival on 24L	5:42 AM, 3/18/09	22.5	101.8
NMS04	91.9	Unknown	Likely departure from 6R.	4:43 PM, 3/21/09	43.0	101.0
NMS04	89.7	B737-300	Arrival on 28	4:13 PM, 2/12/09	30.5	95.5
NMS04	89.1	Lear 25	Arrival on 28	5:20 PM, 2/24/09	28.5	95.3
NMS05	93.0	Unknown	Departure from 24R	12:58 PM, 3/18/09	43.0	101.7
NMS05	92.1	Beechjet 400	Low altitude departure from 24R	9:26 AM, 2/23/09	30.5	96.8
NMS05	91.8	Lear 25	Departure from 24L	10:00 AM, 2/23/09	28.5	98.1
NMS07	99.0	Lear 25	Departure from 24L	10:00 AM, 2/23/09	29.0	104.3
NMS07	93.9	B737-200	Departure from 24R	1:38 PM, 3/29/09	51.5	102.4
NMS07	93.3	Unknown	Departure from 24L	9:03 AM, 2/01/09	28.5	98.3

Sound Exposure Level is a measure that takes into account all noise over the entire duration of an event.

Top 3 Lmaxs at each NMS (2 of 2)

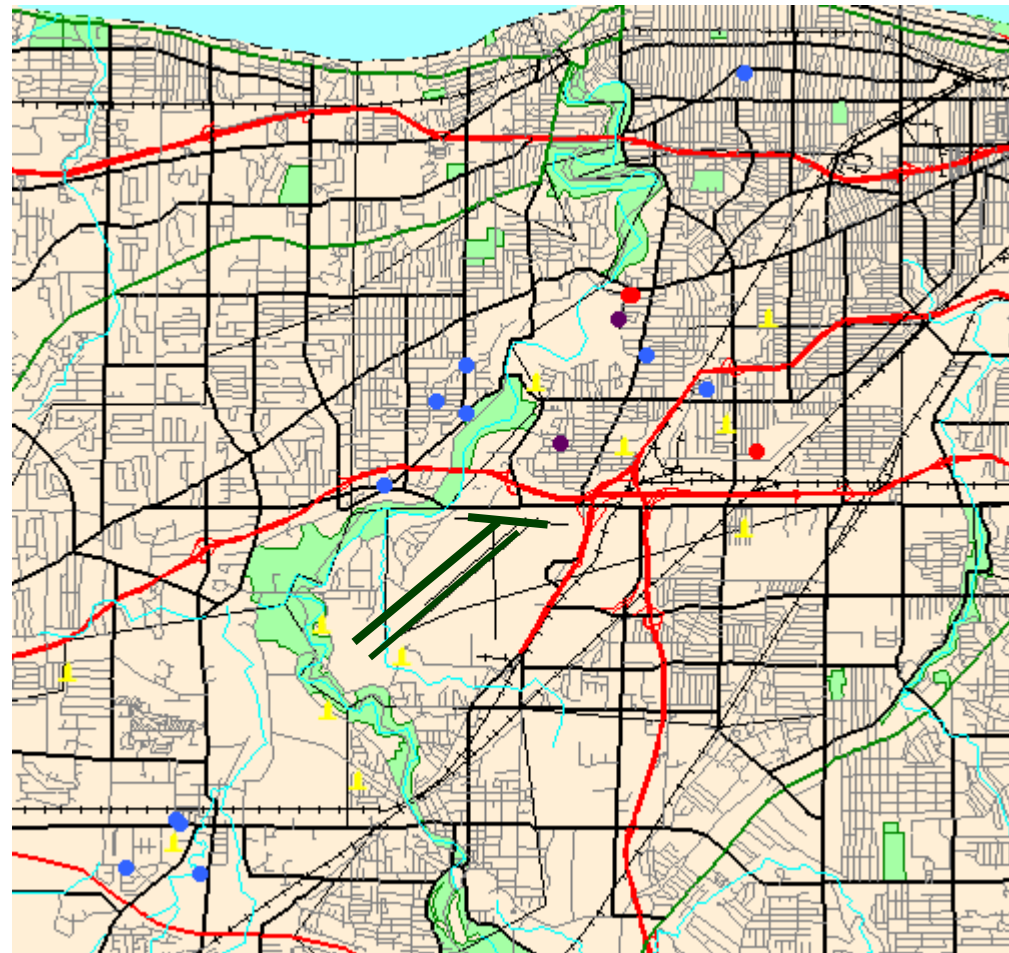
NMS	Lmax (dB)	Aircraft	Operation	Time and Date	Duration (sec)	Sound Exposure Level (dB)
NMS08	91.6	Lear 25	Arrival on 6L	3:09 PM, 3/26/09	34.0	97.4
NMS08	90.5	C17 Globemaster	Arrival on 6R	4:18 AM, 3/29/09	25.0	96.7
NMS08	87.4	Airbus 300-600	Arrival on 6R	6:51 PM, 3/28/09	20.0	94.1
NMS09	90.6	MD88	Departure from 24L	1:57 AM, 2/12/09	36.5	95.4
NMS09	87.5	B737-200	Departure from 24R	1:38 PM, 3/29/09	41.0	95.2
NMS09	86.9	Unknown	Departure from 24L	9:04 AM, 2/01/09	39.0	94.8
NMS10	90.3	Lear 25	Departure from 24R	3:34 PM, 2/24/09	38.0	96.7
NMS10	86.5	Lear 25	Departure from 24R	10:30 AM, 2/24/09	38.0	94.0
NMS10	85.7	Helicopter	Over flight	6:36 AM, 2/28/09	23.0	91.6
NMS11	92.7	Unknown	Departure from 6L or R	1:53 AM, 3/05/09	29.5	100.0
NMS11	85.6	B737-200	Departure from 6R	9:05 AM, 3/13/09	26.0	92.7
NMS11	85.0	B737-500	Arrival on 24L	3:15 PM, 1/02/09	16.5	90.7
NMS12	88.7	Lear 25	Departure from 6L	12:46 PM, 3/26/09	44.5	97.7
NMS12	87.7	MD11	Departure from 6L	10:38 PM, 3/26/09	44.0	96.7
NMS12	87.5	B737-700	Departure from 6L	3:52 PM, 3/08/09	24.0	93.5

Sound Exposure Level is a measure that takes into account all noise over the entire duration of an event.

Noise Hotline (216.898.5220)





City	Jan, 2009		Feb, 2009		Mar, 2009		Total Q1, 2009		Total Q1, 2008	
	Calls	Callers	Calls	Callers	Calls	Callers	Calls	Callers	Calls	Callers
Berea	0	0	0	0	0	0	0	0	1	1
Brook Park	0	0	0	0	0	0	0	0	11	5
Cleveland	5	3	7	4	29	6	41	7	79	15
Fairview Park	0	0	2	2	2	2	4	4	0	0
Lakewood	0	0	0	0	2	1	2	1	0	0
Middleburg Hts.	0	0	0	0	0	0	0	0	0	0
North Olmsted	0	0	0	0	0	0	0	0	0	0
Olmsted Falls	0	0	0	0	3	3	3	3	1	1
Olmsted Twp	1	1	0	0	0	0	1	1	0	0
Parma	0	0	0	0	0	0	0	0	0	0
Parma Heights	0	0	0	0	0	0	0	0	0	0
Rocky River	0	0	0	0	0	0	0	0	8	2
Westlake	0	0	0	0	0	0	0	0	0	0
Other	0	0	1	1	0	0	1	1	0	0
Total	6	4	10	7	36	12	52	17	100	24

1st Quarter, 2009 Complaint Map



LEGEND

Complaints per household

-  1 complaint
-  2 to 5 complaints
-  6 or more
-  Noise Monitoring Station

CLE.
Going places.™

