



CLE SERVICE PLAZA ART PROJECT

Pre-Qualifications Meeting
Friday, November 10, 2017

Agenda

- Introduction
- Project Scope
- Project Location
- Timeline
- Delivery Requirement
- Site Tour

Phyllis L. Jackson

Phyllis L. Jackson

Phyllis L. Jackson

Kassan Bahhur

Kassan Bahhur

On Your Own

Introduction

- The Airport recently built a gas station/restaurant complex at the corner of Brookpark Road and Rocky River Drive in Cleveland, Ohio.
- We are looking for artists whose work will awe patrons and passersby with a statue or exhibit that reflects our theme - *“Taking Flight”*.
- We are seeking the qualifications of professional artists, teams of artists or art institutions who can provide a detailed artistic design and also complete the required fabrication and installation of the proposed artwork at the CLE Service Plaza.
- The aesthetic appearance of the designs should be that of a contemporary, innovative and attractive artwork that fits well within the new space.

CLE Service Plaza Art Project

Scope of Services

- Selected Artist is responsible for creating the final design of the approved concept for the art project.
- Selected Artist shall include samples of previous artwork installation(s) that have been completed.
- Selected Artist must make themselves fully acquainted with the existing conditions of the project site by conducting a visual inspection before submitting a Statement of Qualifications.
- The total budget shall include all Artist design, fabrication and installation costs, including, but not limited to, research, meeting costs, insurance, proposals, miscellaneous documents, travel, sales tax and transportation.

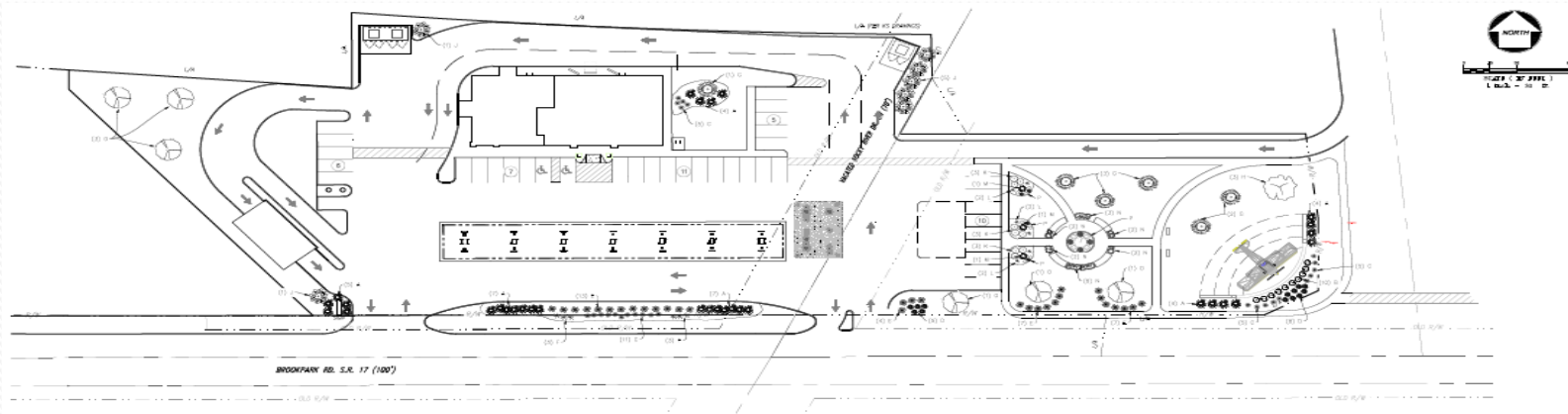
CLE Service Plaza Art Project

Scope of Services (Continued)

- The contract is time sensitive and the Selected Artist must be available and dedicated to completing all phases of the project by August 31, 2018.
- Selected Artist will coordinate with the Airport's Project Manager(s) during all phases of the project to ensure project milestones are being met.
- The project scope is not deemed all inclusive, but instead, defines the City's minimum expectations and requirements for the project.
- We reserve the right to modify the scope of services at any time before the execution of a contract to reflect changes arising out of this qualifications process.

CLE Service Plaza Art Project

Project Location



- GRASS SEED SHALL BE FRESH, CLEAN, DRY, NON-CROP SEED COMPLYING WITH THE ASSURANCE OF SPECIAL SEED ANALYSIS RULES FOR TESTING SEEDS FOR PURITY AND GERMINATION TOLERANCES.
- A WOOD BARRIER SHALL BE INSTALLED IN ALL MULCHED ISLAND AREAS.
- ALL SEEDS TO BE SOWN SHALL WEIGH NO LESS THAN FIVE POUNDS OF SEED PER ONE THOUSAND SQUARE FEET, UNTIL SOON AND PLANTED WITH TREES MUST BE REDUCED FOR NEW LAWNS. GRASS SEED MIX SHALL CONSIST OF THE FOLLOWING IN LAWN AREAS WITHOUT DESIGN CONTROL MATTING:

PROPORTION	NAME	MIN. S	MIN. S PER 1000 SQ. FT.	MAX. S PER 1000 SQ. FT.
50%	Baird Mangrove	80	85	0.50
33%	Prairie Fire	85	99	0.50
15%	Blackberry & Rosewood Tree	90	99	0.50

* IN LAWN AREAS WITH DESIGN CONTROL MATTING - SEEDING SHALL BE IN ACCORDANCE WITH CDDT 2010 CONSTRUCTION AND MATERIALS SPECIFICATIONS ITEM 609.09-1 CLASS 3B

PLANTING NOTES:

- CONSULT PLANT LIST FOR PLANT SIZES AND SPECIFICATIONS.
- CONTRACTOR IS RESPONSIBLE FOR LOCATING AND PROTECTING ALL UTILITIES PRIOR TO INSTALLATION. NOTIFY OWNER IF FIELD CONDITIONS WARRANT ADJUSTMENT OF PLANT LOCATIONS.
- CONTRACTOR IS RESPONSIBLE FOR ALL PLANTS DRAWN ON PLANS. PLANT LIST QUANTITIES ARE FOR CONVENIENCE ONLY.
- ALL SHOULDER AND GROUND COVER (SEE SCOTING AND MOW) TO BE MULCHED WITH A MINIMUM OF 2 INCHES OF SOFTLY SPREAD HAY/STRAW MULCH. ALL MULCH AREAS TO HAVE A WOOD BARRIER INSTALLED.
- CONTRACTOR TO REMOVE A FULL 1 YEAR GUARANTEE ON ALL PLANTS. INITIAL AND PROMISE COMPLETE MAINTENANCE ON ALL WORK DONE BEGINNING ON THE DAY OF APPROVAL FROM OWNER'S REPRESENTATIVE AND CONTINUING FOR A THREE MONTH PERIOD AT WHICH THE OWNER'S REPRESENTATIVE WILL RELEASE THE CONTRACTOR.
- EACH PLANTING TO BE PRICED FROM BIDDING, BIDDING PREPARATION AND MECHANICAL INQUIRIES AND, IN ALL RESPECTS, BE READY FOR FIELD PLANTING.
- ALL PLANTS TO CONFORM TO THE AMERICAN STANDARD FOR NURSERY STOCK (ANSI-Z603.1) IN REGARDS TO SEEDING, SPACING AND SIZE. SPECIFICATIONS:
 - PLANTING HOLES TO BE ONE A MINIMUM OF THREE TIMES THE WIDTH AND ONE FIFTH DEEPER THAN THE SIZE OF THE ROOT BALL OF BERRY SHRUBS AND TREES AND TO BE AMENDED WITH ORGANIC SOIL CONDITIONER (I.E. NATURAL HONEYCOMB OR PRO MIX).
 - IN AREAS WHERE REWORK OR HEAVILY COMPACTED SOIL FILL IS ENCOUNTERED, THE PLANTING HOLES ARE TO BE FILL TO A MINIMUM OF THREE TIMES THE WIDTH AND ONE FOOT DEEPER THAN THE SIZE OF THE ROOT BALL. EMPTY LANDSCAPE ADDRESS #1 FILL CONDITIONER IMMEDIATELY ADJACENT TO PLANT LOCATIONS.
 - EXISTING GRASS TO BE REMOVED, IF PRESENT, AND TOPSOIL TO BE SPREAD 100MM AND REINFORCED TO BE REMOVED. ALL ROOTS AND OTHER LARVAE THAT 1 INCH IN DIAMETER PRIOR TO LAYING SOIL OR SEEDING.
 - ALL PLANTS TO BE DRAIN OR PLANT SUBSTITUTIONS ARE TO BE AUTHORIZED BY THE OWNER.
 - TOPSOIL ARE TO BE 3 PARTS SCREENED TOPSOIL AND 1 PART ORGANIC MATERIAL (I.E. NATURAL HONEYCOMB OR PRO MIX).
 - MIN. 4" CLEAN TOPSOIL TO BE PLACED ON ALL LANDSCAPE AREAS AND SLOPES 2:1 OR 10:1 ON FLATES.
 - ALL PAVING ISLANDS ARE TO MATCH EXISTING UNLESS OTHERWISE NOTED.
 - THE CONTRACTOR SHALL REPLACE ANY AND ALL LANDSCAPING THAT IS DAMAGED AS THE RESULT OF CONSTRUCTION ACTIVITIES.

	COMMON NAME	SCIENTIFIC NAME	START SIZE	MATURE SIZE	QUANTITY
A	SAYBROOK GOLD JUNIPER	JUNIPERUS CHINENSIS "SAYBROOK GOLD"	5 GAL. 18"/24"	56" H3'	31
B	GREEN VELVET BOXWOOD	BUXUS MICROPHYLLA VAR. KOREANA	3 GAL. 18"	53" H3'	10
C	LITTLE HENRY SWEETSPICE	ITEA VIRGINICA "LITTLE HENRY"	3 GAL. 18"	52" H2'	26
D	MAGIC CARPET SPIRAEA	SPIRAEA JAPONICA "MAGIC CARPET"	3 GAL. 15"	52" H2'	13
E	WARDS YEW	TAXUS X MEDIA "WARDS"	8.8B 18"/24"	54" H3'	31
F	DWARF FOUNTAIN GRASS	PENNISETUM ALDOPECUROIDES "HAMMILL"	3 GAL.	52" H3'	6
G	BABY BLUE SPRUCE	PICEA PLUNGENS "BABY BLUE"	8.8B 5'/6"	57" H20"	6
H	THUNDERCLOUD CHERRY PLUM	PRUNUS CERASIFERA "THUNDER CLOUD"	8.8B 2" GAL.	520" H20"	1
J	DWARF BURNING BUSH	TOXOXYLUS ALATUS "COMPACTUS"	8.8B 24"/30"	56" H6'	6
K	ROYAL BURGUNDY BARBERY	BERBERIS THUNBERGHII ATROPURPUREA	3 GAL. 15"/18"	53" H2'	9
L	FEATHER REED GRASS	CALAMAGROSTIS AC. "KAHL FORESTER"	3 GAL.	53" H6'	6
M	SUNSET ARBOVITAE	THUJA OCCIDENTALIS "SUNSET"	8.8B 5"	54" H12'	3
N	GREEN GEM BOXWOOD	BUXUS X "GREEN GEM"	3 GAL. 15"	52" H2'	17
O	PRAIRIE FIRE CRABAPPLE	MALUS PRAIRIE FIRE	2" GAL.	520" H20"	6
P	ANNUAL FLOWERS				

E = EVERGREEN D = DECIDUIOUS P = PERENNIAL
LANDSCAPE PARAMETERS - STAY WITHIN P/L, VERY LOW MAINTENANCE, HARDY, UNDER 25" IN HEIGHT



CLE Service Plaza

Project Location (Continued)



Statement of Qualifications Timeline

- Release of Request for Qualifications **October 27, 2017**
- Artist Briefing **November 10, 2017**
- Deadline for Inquiries **November 17, 2017**
- Written Response to Inquiries **November 24, 2017**
- Deadline for Statements **December 8, 2017**

Statement of Qualifications

Delivery Requirements

- **When are Statements due?**
 - By December 8, 2017
 - No Later than 4:00pm EST
- **What do you need to submit?**
 - (7) Complete Statements
 - (1) Unbound original
 - (5) Identical Bound Copies
 - (1) CD Rom, DVD Rom or USB memory Stick in Portable Document (“PFD”) or Microsoft Word File

Statement of Qualifications

Delivery Requirements (Continued)

- **Sealed Statements Labeled:**
 - Statement of Qualifications – CLE Service Station Art Project
- **Hand Delivered:**
 - No Hand Deliver Option Available
- **Mailed:** **CLEVELAND AIRPORT SYSTEM**
Attention: Kassan Bahhur
Cleveland Hopkins International Airport
Administrative Offices
5300 Riverside Drive
P. O. Box 81009
Cleveland, Ohio 44181-0009



Statement of Qualifications

Delivery Requirements (Continued)

- **Signed Documents:** (The following documents must be signed and/or notarized if required or bids maybe rejected.)
 - 1) W-9 Form
 - 2) 2015 Non-Competitive Bid Statement Form
 - 3) Northern Ireland Fair Employment Practice Disclosure
 - 4) Affidavit



QUESTIONS and ANSWERS

Please refer all future questions via phone to:

KASSAN BAHHUR

(216) 265-6186

- or -

via email to:

kbahhur2@clevelandairport.com