



Noise Compatibility Report

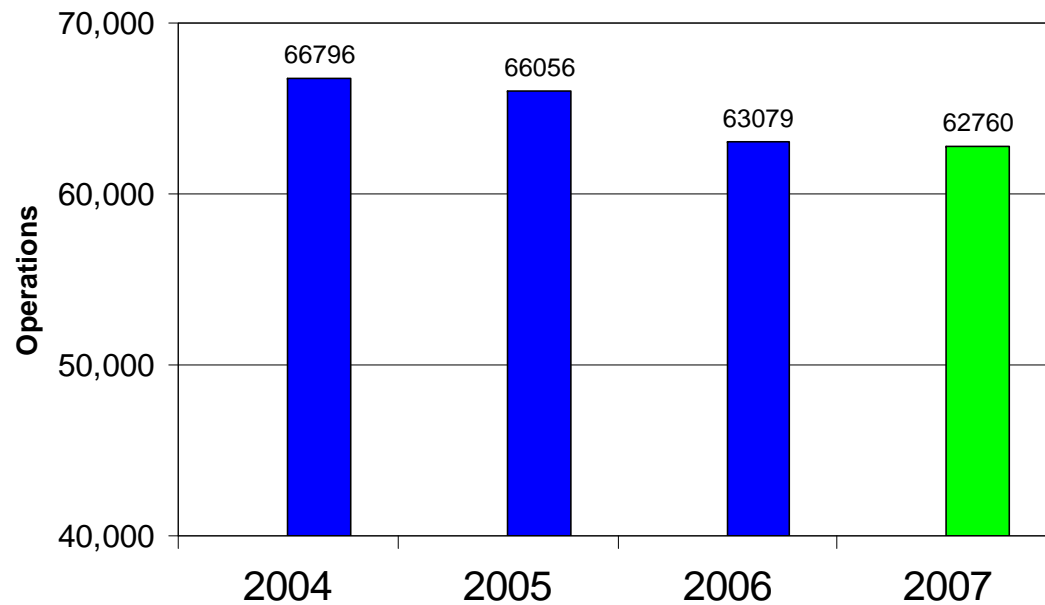
2nd Quarter 2007

Aug 15, 2007

Aircraft Operations

2nd Quarter Operations

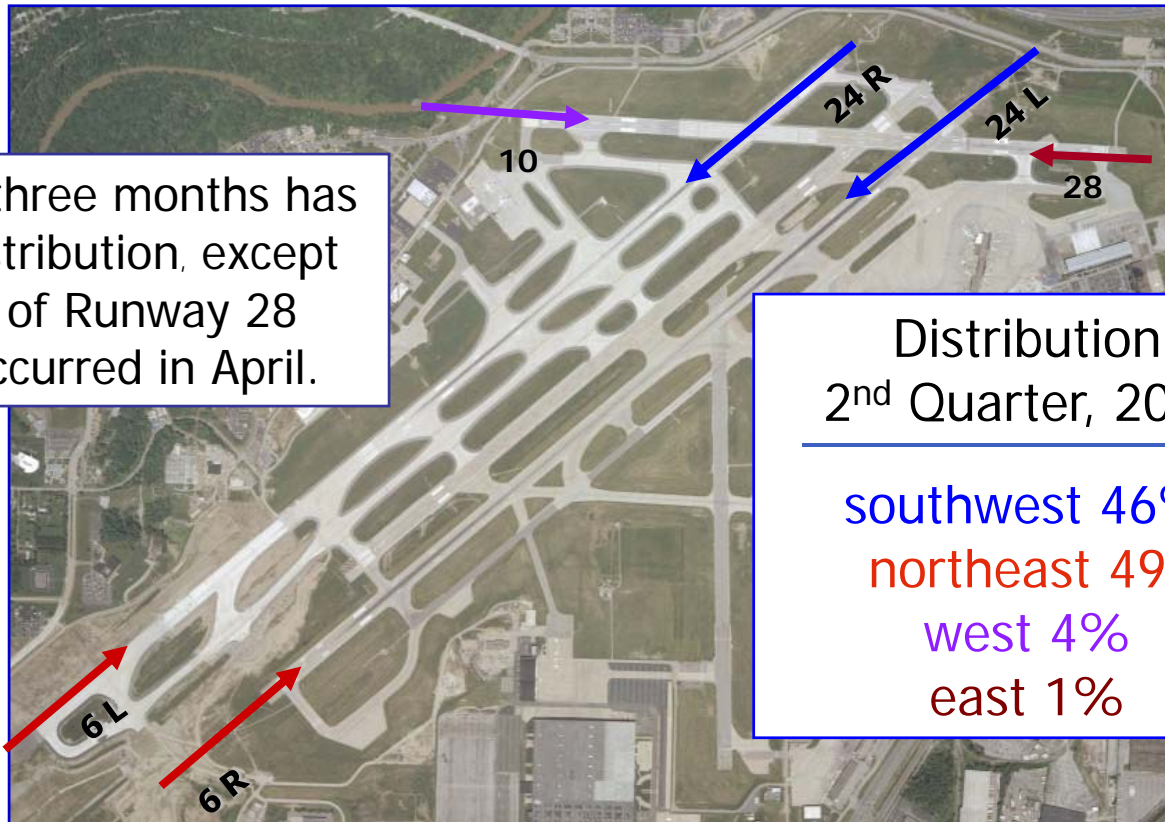
Aircraft operations nearly the same as 2nd quarter of 2006



2nd Quarter 2007

	Landings & Takeoffs	Distribution
Commercial		
- Stage 2 with hush kit	740	1.2%
- Stage 3	18,264	29.1%
- Regional Jet	29,118	46.4%
- Turboprop	9,148	14.6%
Air Taxi	1,953	3.1%
General Aviation	3,368	5.4%
Military	174	0.3%
	62,765	100.1%

Runway Use Landings



Each of the three months has a similar distribution, except that 86% of Runway 28 landings occurred in April.

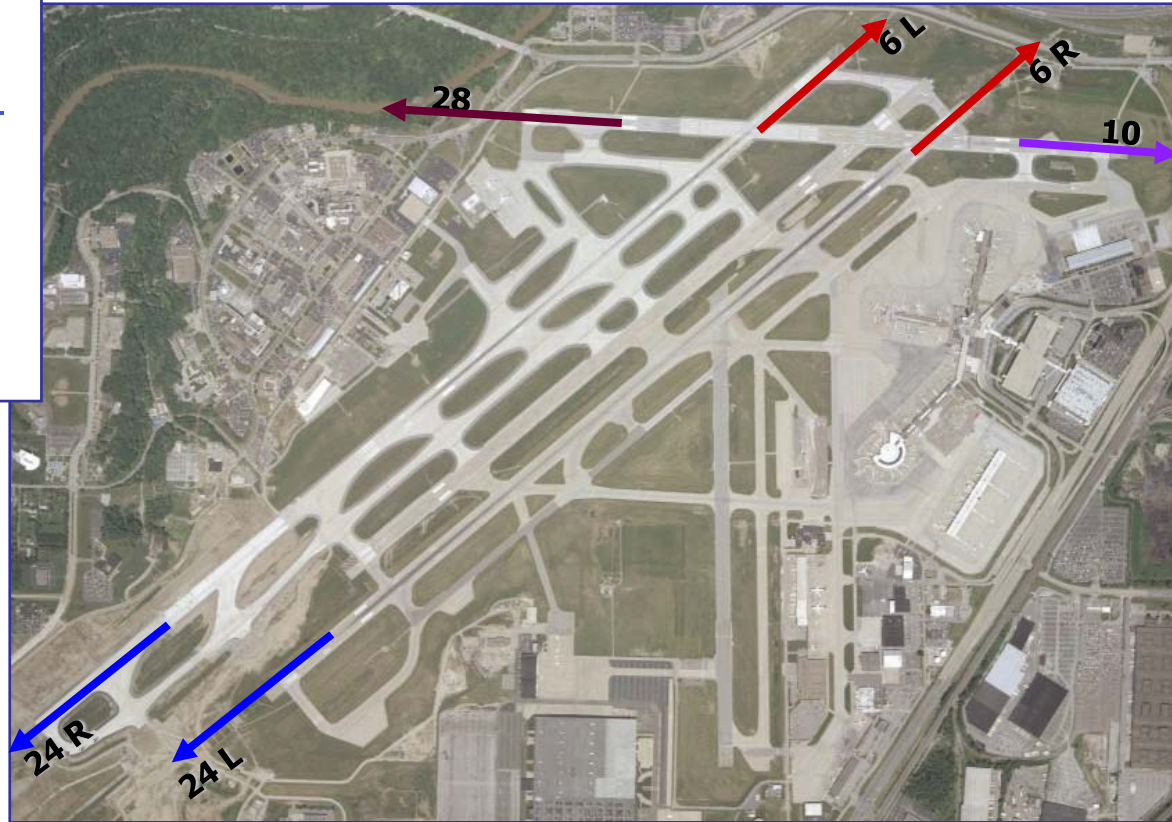
Distribution
2nd Quarter, 2007

southwest 46%
northeast 49%
west 4%
east 1%

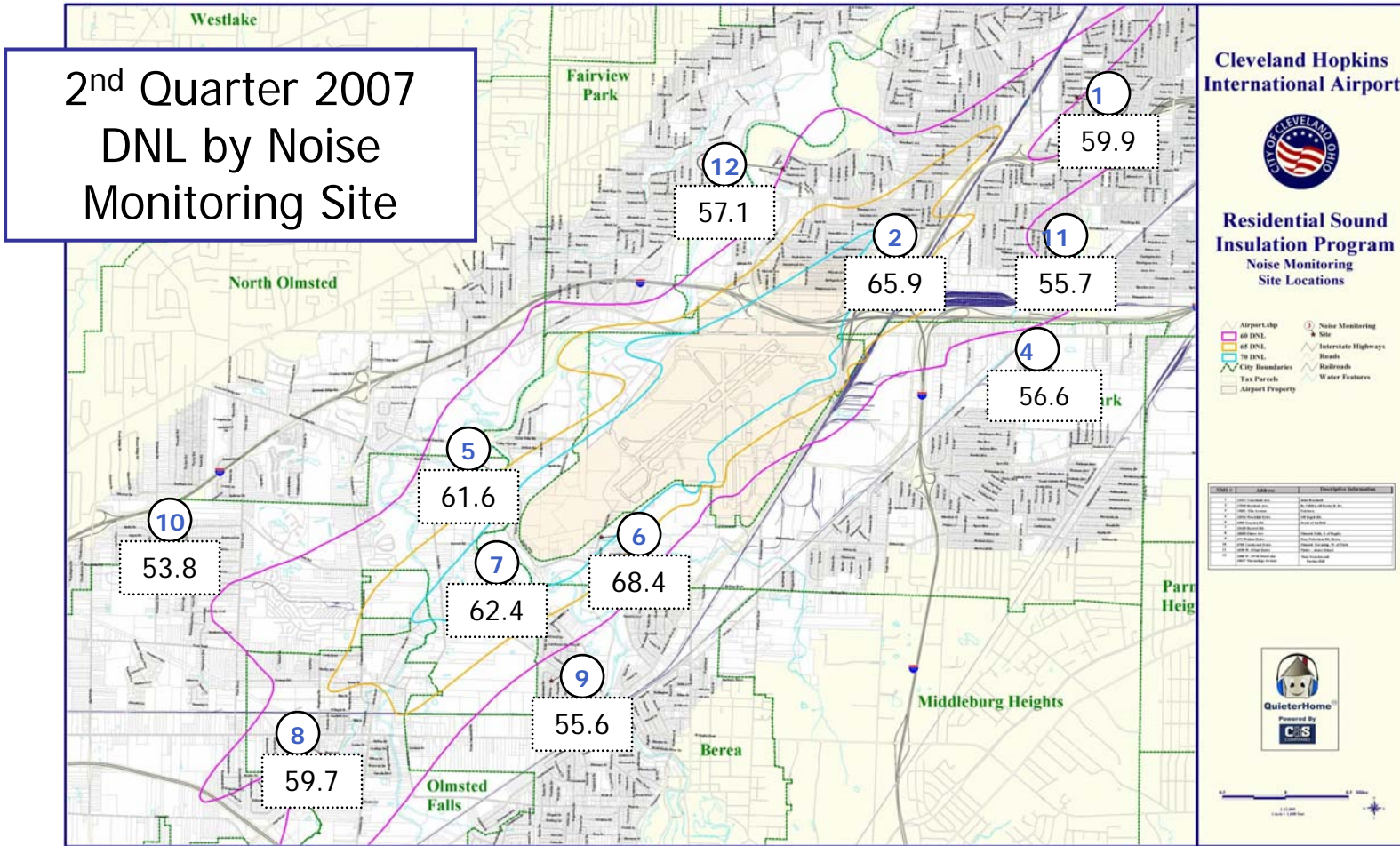
Runway Use Take-offs

Distribution
2nd Quarter, 2007

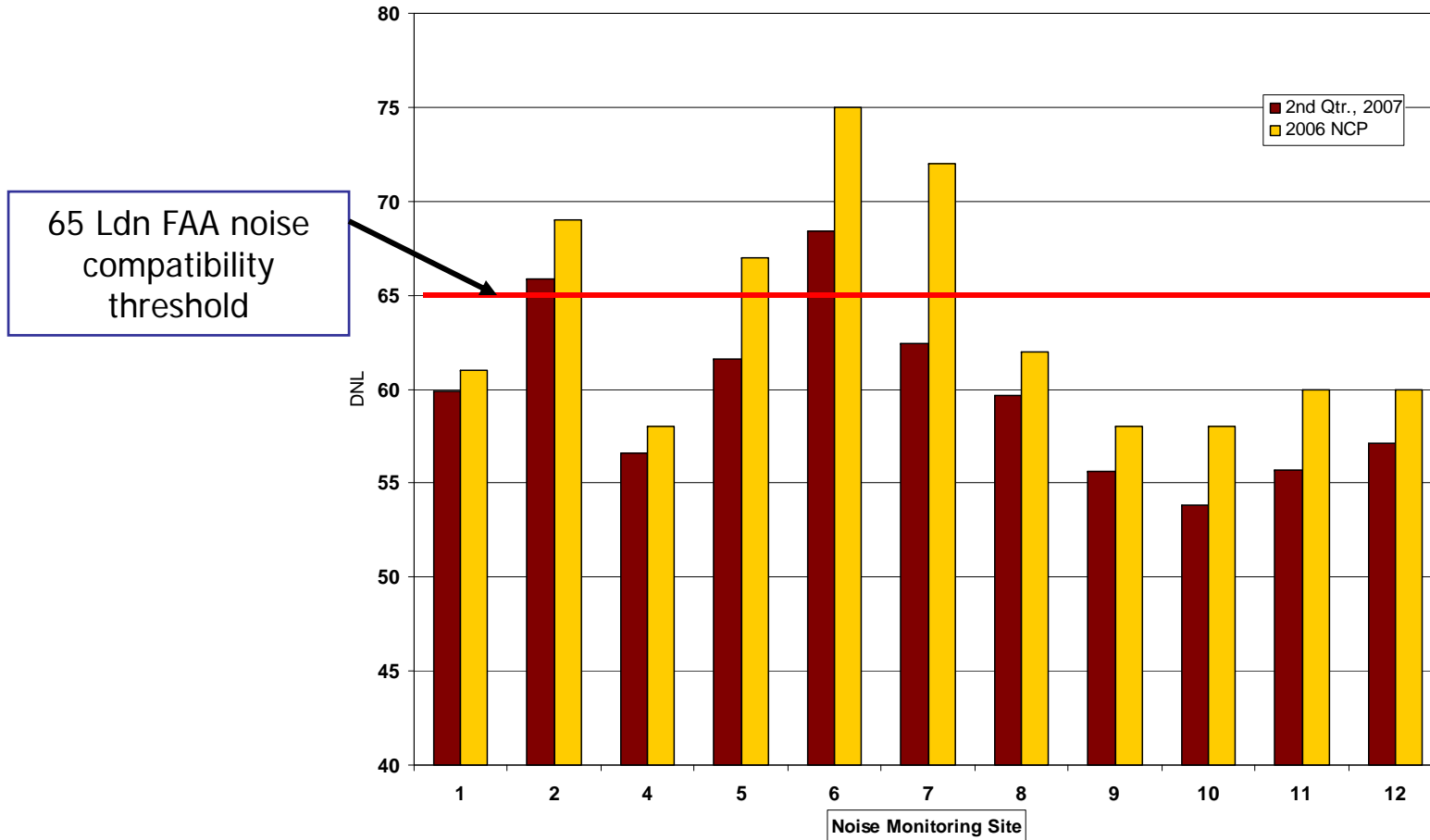
southwest 48%
northeast 50%
east 2%
west >0.5%



Aircraft Noise

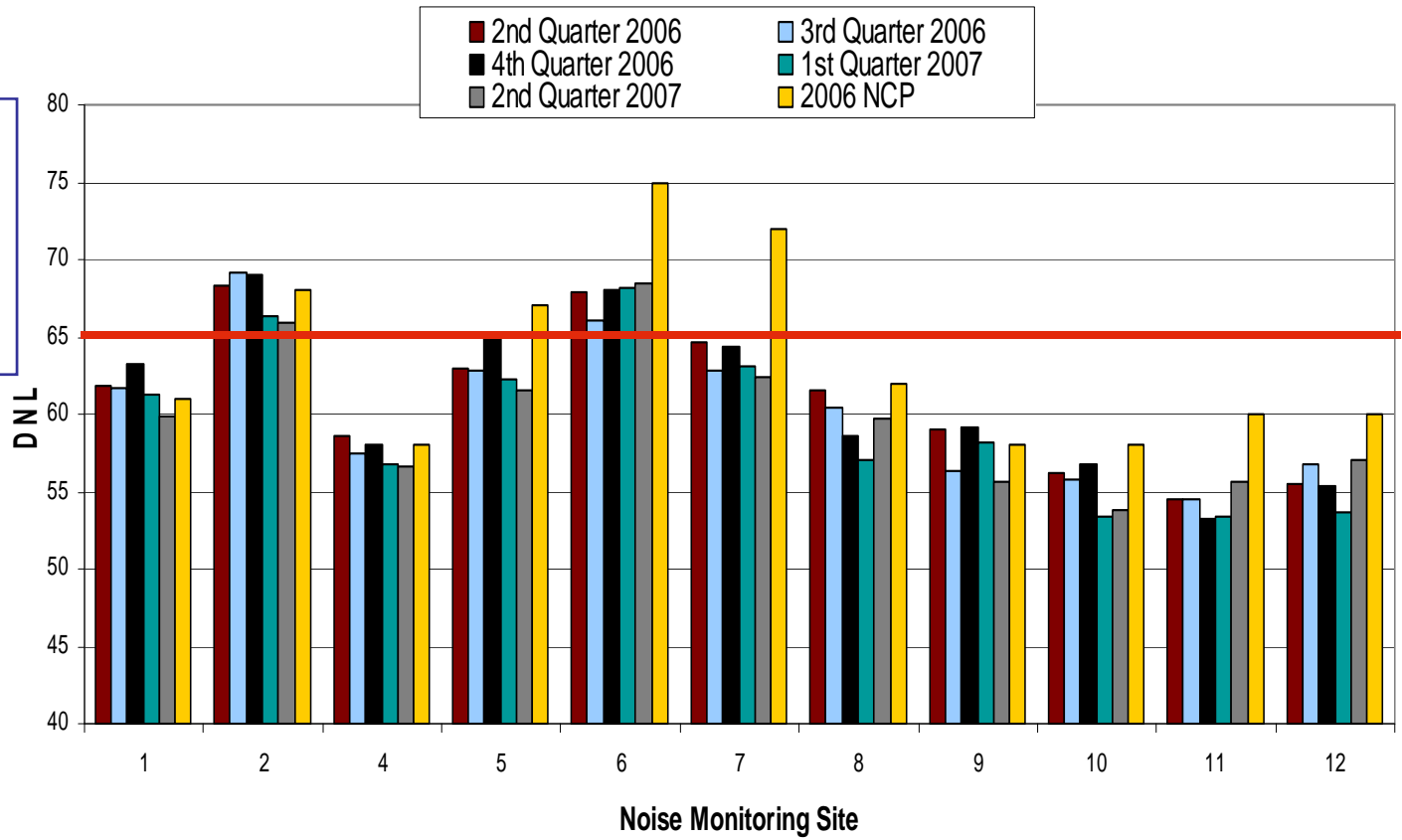


DNL 2nd Quarter 2007



DNL Comparison by Quarter

65 DNL
federal noise
compatibility
threshold



Noise Monitoring Site 3 was permanently dismantled due to relocation of Brookpark Road

Noise Hotline (216.898.5220)

City	Apr, 2007		May, 2007		Jun, 2007		Total Q2, 2007		Total Q2, 2006	
	Calls	Callers	Calls	Callers	Calls	Callers	Calls	Callers	Calls	Callers
Berea	0	0	0	0	0	0	0	0	0	0
Brecksville	0	0	0	0	3	1	3	1	0	0
Brook Park	4	2	1	1	0	0	5	3	1	1
Cleveland	17	6	19	5	23	11	59	16	10	6
Fairview Park	2	2	5	2	5	3	12	4	16	9
Lakewood	0	0	0	0	0	0	0	0	0	0
North Olmsted	0	0	2	1	4	2	6	2	16	2
North Ridgeville	0	0	0	0	0	0	0	0	0	0
Olmsted Falls	0	0	1	1	3	2	4	2	2	1
Olmsted Twp	1	1	1	1	3	2	5	4	3	3
Parma	0	0	0	0	0	0	0	0	2	2
Parma Heights	0	0	0	0	0	0	0	0	0	0
Rocky River	4	3	8	3	24	5	36	7	4	4
Sheffield Lake	0	0	0	0	0	0	0	0	1	1
Westlake	0	0	0	0	0	0	0	0	0	0
Total	28	14	37	14	65	26	130	39	24	20

CLE.
Going places.™

